

**Horsford Road, Brixton, SW2**

**£670,000**

2 bedroom flat for sale

## Property Details

A two double bedroom Victorian flat with a South-West facing garden in a converted town house. The property boasts fantastic dimensions with a total internal area of over 800 square feet. The flat comprises two comfortable double bedrooms, a modern bathroom and a large open plan reception and kitchen diner tucked away at the back of the building. The folding concertina doors span the width of the building which allows the living space to flow seamlessly into the secluded South facing private garden. Brixton tube is a ten-minute walk and it is a short walk to Brockwell Park.

## Features

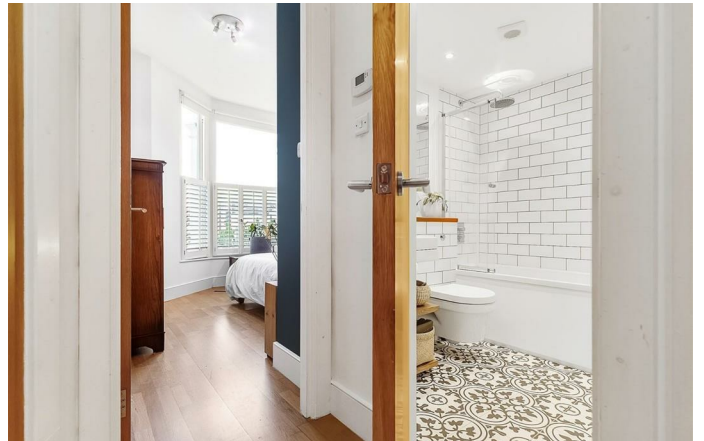
- Two double bedrooms
- Victorian conversion
- South-West facing private garden
- Over 800 square feet of internal space
- Demised cellar
- Bright and airy throughout
- Sought after location
- Close to Brockwell Park

Council tax band D    EPC rating D (67)









Horsford Road, Brixton, SW2

**K**

## 2 Bedroom Flat

Approx internal area:

**841 sqft 78 sqm**

While we do try our very best, floor plans are produced as a guide only and we take no responsibility for the precise accuracy with which any property is represented

## Horsford Road





Horsford Road, Brixton, SW2

